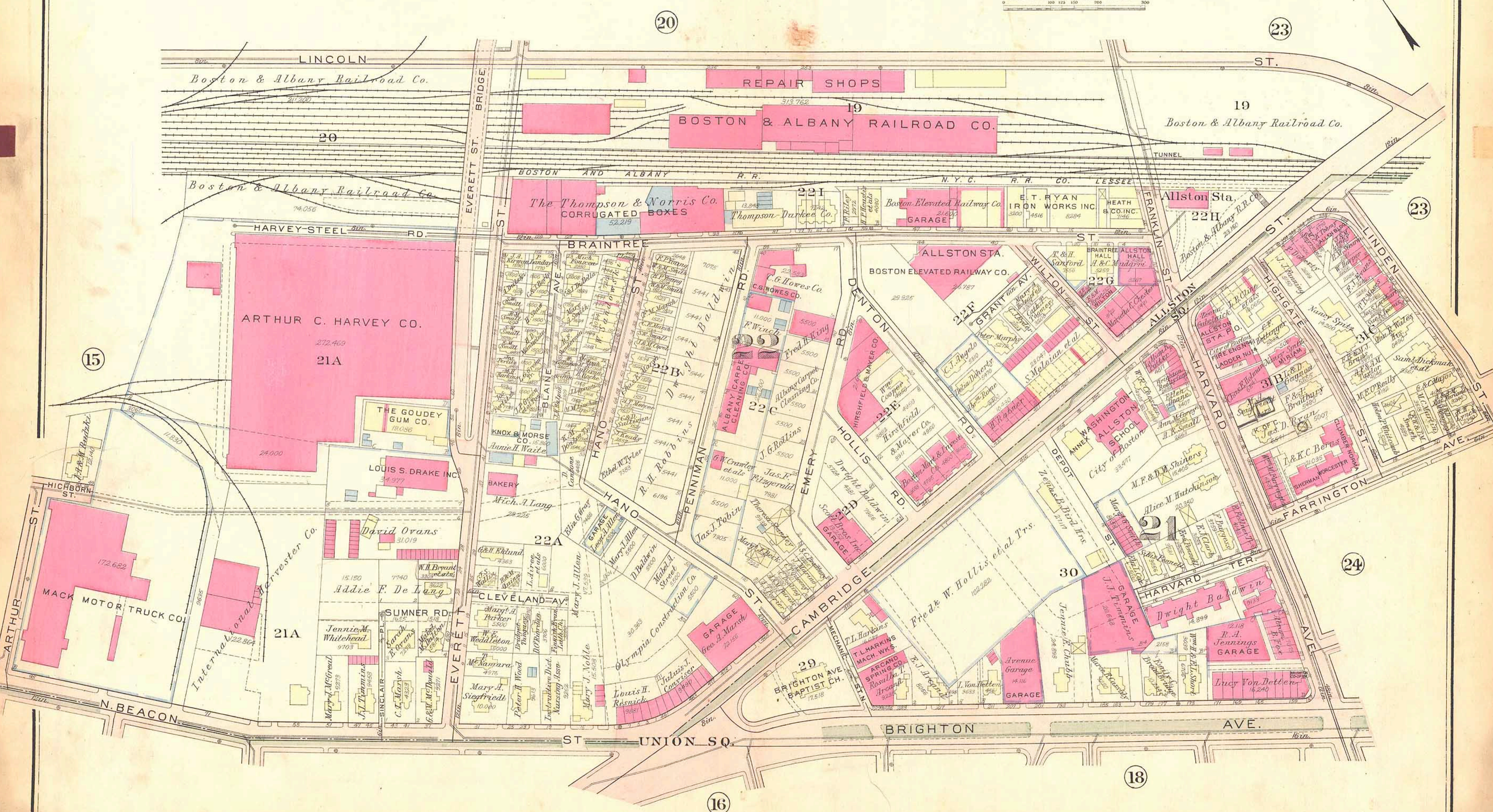


PART OF  
**BRIGHTON**  
**WARDS 21 & 22**  
CITY OF BOSTON.  
Scale 100 feet to the Inch.



20

23

LINCOLN ST.  
Boston & Albany Railroad Co.  
REPAIR SHOPS  
BOSTON & ALBANY RAILROAD CO.  
TUNNEL

BOSTON AND ALBANY R.R. N.Y.C. R.R. CO. LESSEE  
The Thompson & Norris Co. CORRUGATED BOXES  
Thompson-Durkee Co.  
Boston Elevated Railway Co. GARAGE  
E.T. RYAN IRON WORKS INC  
HEATH & CO. INC.  
Allston Sta. 22H

HARVEY-STEEL RD.  
ARTHUR C. HARVEY CO. 21A  
THE GOUDEY GUM CO.  
LOUIS S. DRAKE INC.  
DAVID OVANS  
KNOX & MORSE CO.  
Annie H. Waite  
BAKERY  
Mich. A. Lang  
HANO ST.  
BRAINTREE ST.  
DENTON ST.  
HOLLIS ST.  
EMERY ST.  
CAMBRIDGE ST.  
HARVARD ST.  
FARRINGTON ST.  
LINDEN ST.

22A  
22B  
22C  
22D  
22E  
22F  
22G  
22H  
22I  
22J  
22K  
22L  
22M  
22N  
22O  
22P  
22Q  
22R  
22S  
22T  
22U  
22V  
22W  
22X  
22Y  
22Z

WILTON ST.  
GRANT AV.  
ALLSTON STA. BOSTON ELEVATED RAILWAY CO.  
C.G. HOWES CO.  
Fred H. King  
Albany Carpet Cleaning Co.  
J.G. Rollins  
Jas. J. Robin  
Theresa Bennett  
S. J. Higgins  
W. J. Higgins  
M.F. & D.M. Shiners  
Alice M. Hutchinson  
J.J. Timmins  
Dwight Baldwin  
R.A. Jennings GARAGE  
Lucy Von Detten

WASHINGTON ANNEX  
ALLSTON SCHOOL City of Boston  
M.F. & D.M. Shiners  
Alice M. Hutchinson  
J.J. Timmins  
Dwight Baldwin  
R.A. Jennings GARAGE  
Lucy Von Detten

BRIGHTON AVE.  
UNION SQ.  
BRIGHTON AVE.  
29  
30  
31  
32  
33  
34  
35  
36  
37  
38  
39  
40  
41  
42  
43  
44  
45  
46  
47  
48  
49  
50

16

18

15

23

24