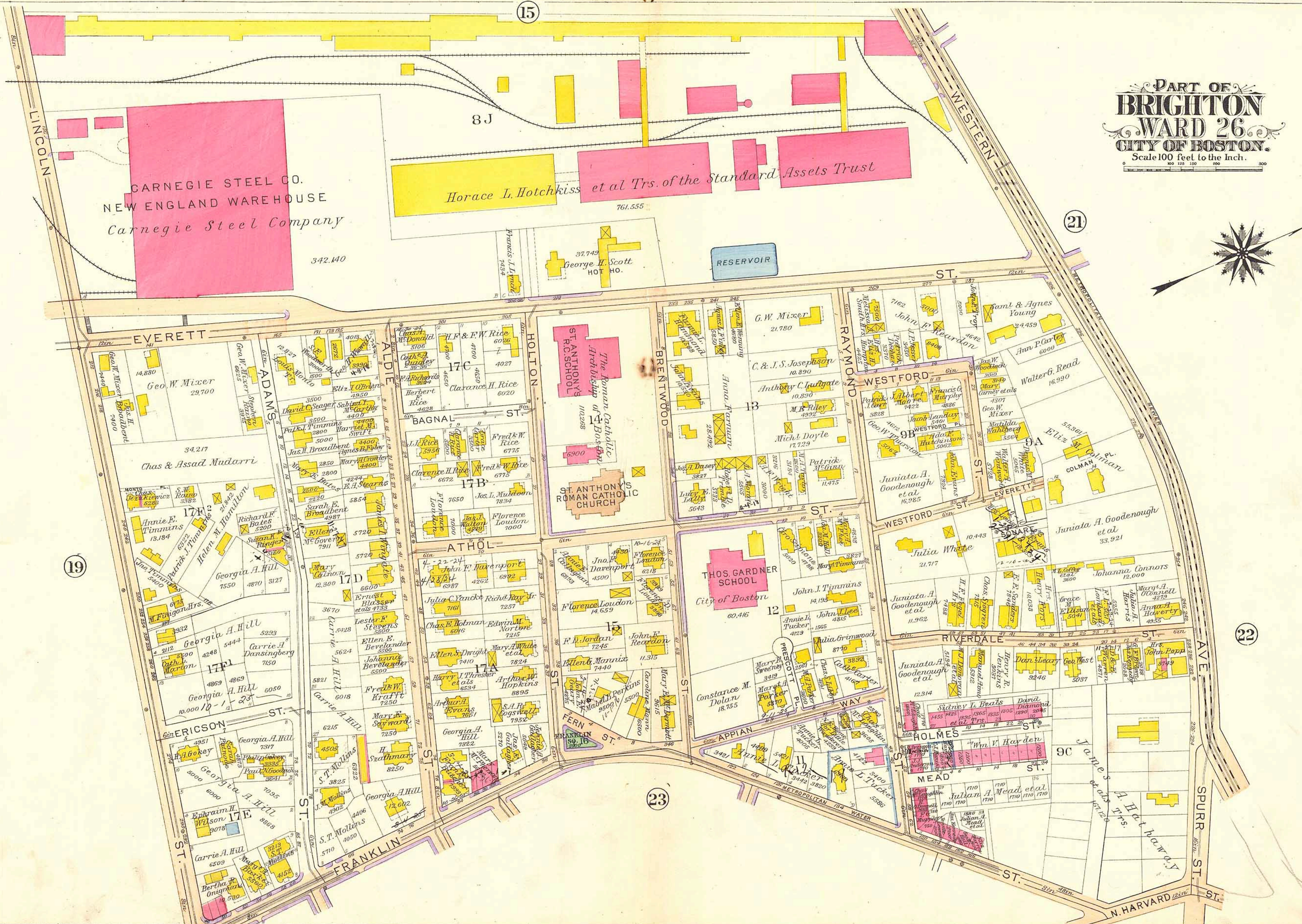
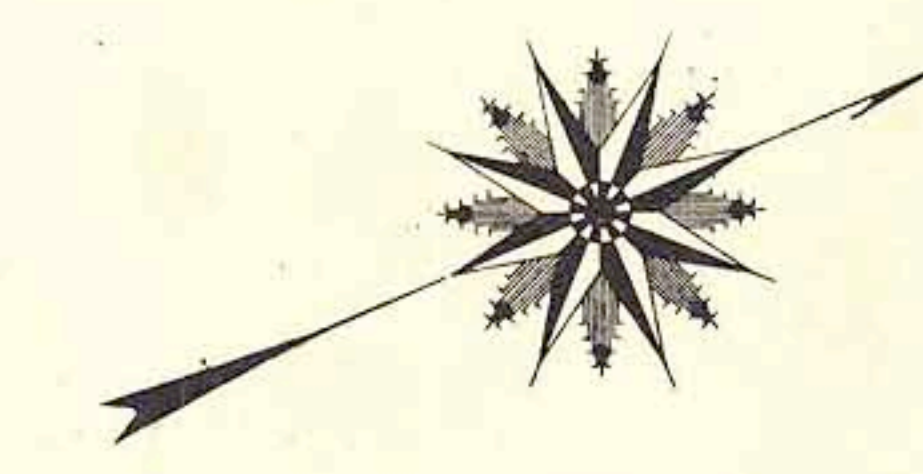


PART OF BRIGHTON WARD 26 CITY OF BOSTON. Scale 100 feet to the Inch.



CARNEGIE STEEL CO. NEW ENGLAND WAREHOUSE Carnegie Steel Company

Horace L. Hotchkiss et al Trs. of the Standard Assets Trust

RESERVOIR

ST. ANTHONY'S R.C. SCHOOL The Roman Catholic Archdiocese of Boston

ST. ANTHONY'S ROMAN CATHOLIC CHURCH

THOS. GARDNER SCHOOL City of Boston

Geo. W. Mixer 29,700

Chas & Assad Mudarri 34,217

Georgia A. Hill 7,550 4,870 3,127

Georgia A. Hill 5,293 5,444 7,150

Georgia A. Hill 7,317 7,095 8,880

Jas. H. Broadbert 4,400

Richard F. Bates 5,200

Georgia A. Hill 6,018

Georgia A. Hill 7,250

Georgia A. Hill 8,250

Clarence H. Rice 6,020

Clarence H. Rice 6,672

Julia C. Yanke 7,257

Georgia A. Hill 7,922

Georgia A. Hill 8,250

Fredk W. Rice 6,775

Florence Loudon 7,000

John E. Reardon 11,315

Georgia A. Hill 7,922

Georgia A. Hill 8,250

Anna Farming 28,492

John J. Timmins 14,193

John E. Reardon 11,315

Georgia A. Hill 7,922

Georgia A. Hill 8,250

G. W. Mixer 21,780

John J. Timmins 14,193

John E. Reardon 11,315

Georgia A. Hill 7,922

Georgia A. Hill 8,250

John F. Reardon 24,459

John J. Timmins 14,193

John E. Reardon 11,315

Georgia A. Hill 7,922

Georgia A. Hill 8,250

Saml & Agnes Young 24,459

John J. Timmins 14,193

John E. Reardon 11,315

Georgia A. Hill 7,922

Georgia A. Hill 8,250

Walter G. Read 16,990

John J. Timmins 14,193

John E. Reardon 11,315

Georgia A. Hill 7,922

Georgia A. Hill 8,250

8J

21

19

22

23