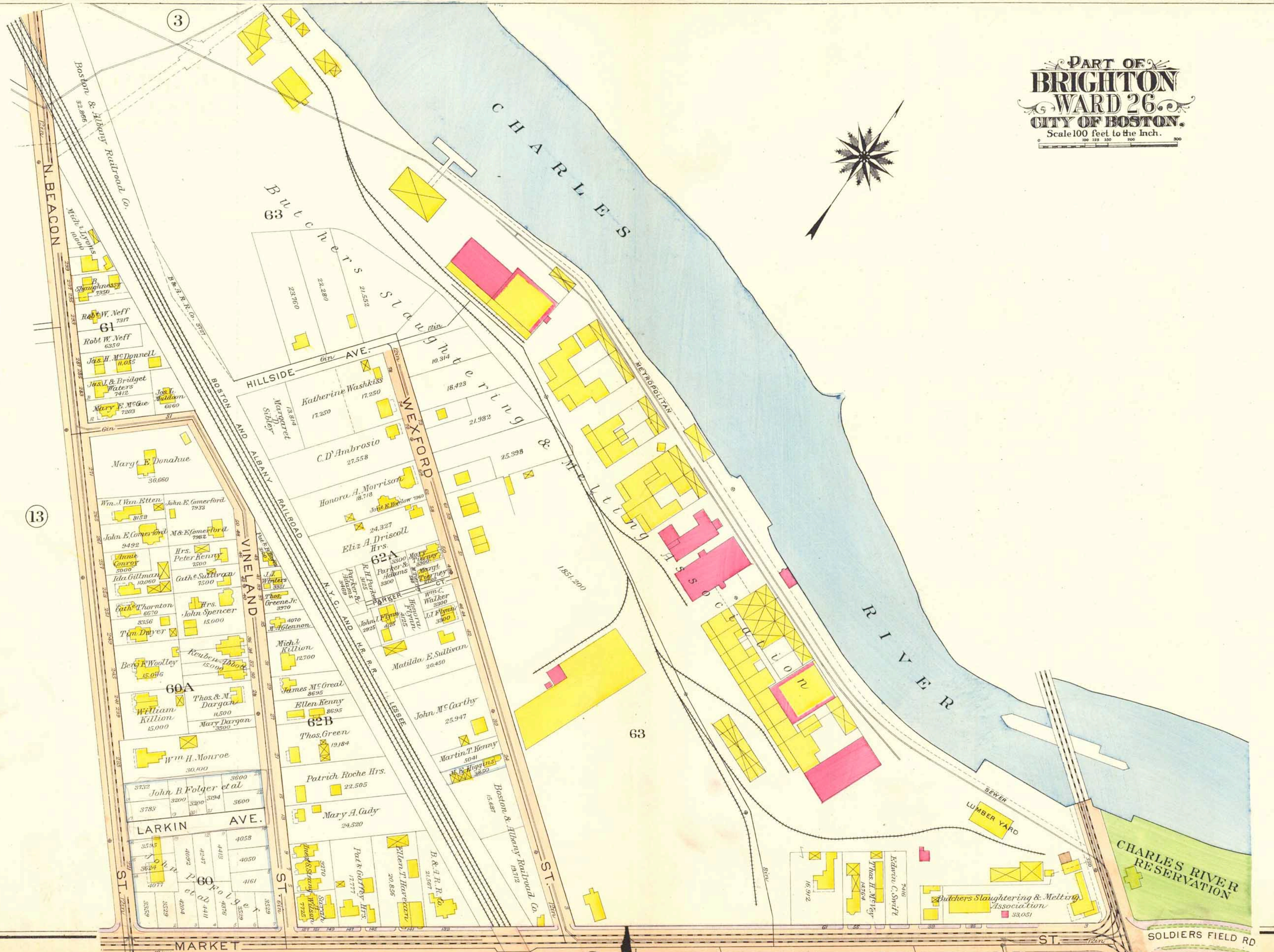


PART OF
BRIGHTON
WARD 26.
CITY OF BOSTON.
Scale 100 feet to the Inch.



3

13

63

15

Boston & Albany Railroad Co.
N. BEACON

Butcher's
63

CHARLES RIVER

HILLSIDE AVE.

Slaughering & Melting

MEXFORD

Margt. E. Donahue
38,660

Katherine Washkiss
17,250

C. D' Ambrosio
27,558

Wm. J. Van Etten
8,158

Honora A. Morrison
18,718

Eliz. A. Driscoll
24,327

John E. Comerford
9,492

Mrs. Peter Kenny
7,500

Parker & Adams
3,300

Ida Gillman
10,060

John Spencer
15,000

John Flynn
2,925

Cath. Thornton
6,670

John Dwyer
15,000

John Flynn
2,925

60A
Thos. & M. Dargan
11,500

Mich. Killion
12,700

John M. McCarthy
25,947

Wm. H. Monroe
30,100

62B
Thos. Green
19,184

Martin T. Kenny
5,041

John B. Folger et al
3,732

Patrick Roche Hrs.
22,505

Mary A. Gady
24,520

LARKIN AVE.

Mary A. Gady
24,520

John B. Folger et al
3,732

60
John B. Folger et al
3,732

John B. Folger et al
3,732

John B. Folger et al
3,732

MARKET ST.

John B. Folger et al
3,732

John B. Folger et al
3,732

SEWER
LUMBER YARD

CHARLES RIVER RESERVATION

Butcher's Slaughtering & Melting Association
33,051

SOLDIERS FIELD RD.