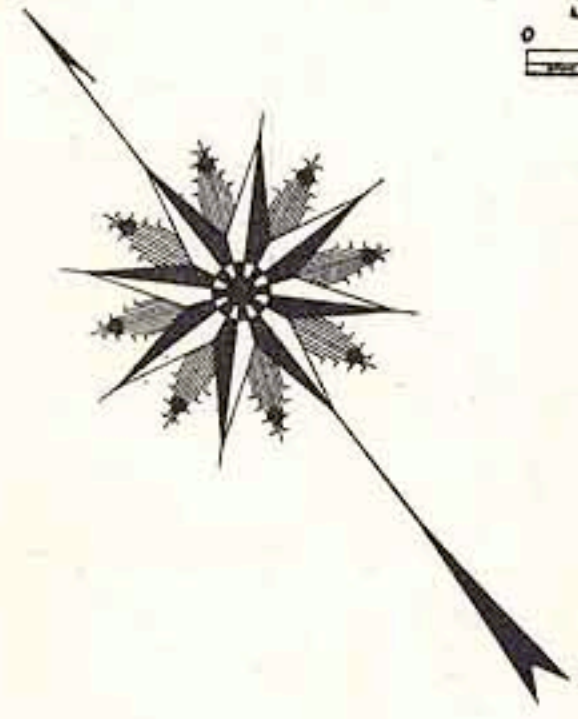


PART OF BRIGHTON Ward 25 CITY OF BOSTON.

Scale 100 feet to the Inch.

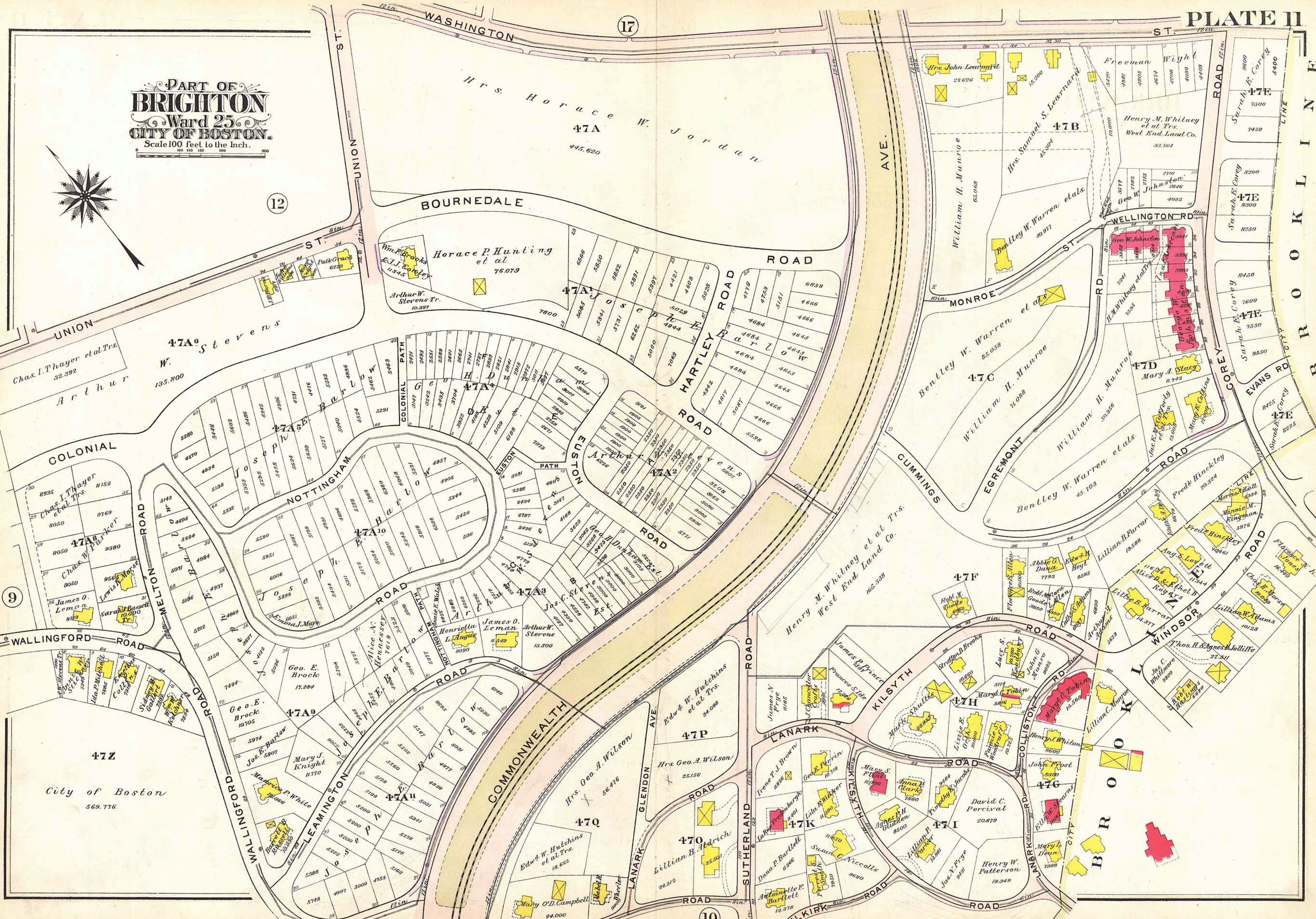


12

17

9

10



BROOKLINE

WELLINGTON RD

EVANS RD

WINDSOR RD

BARRETT

LANARK

SELKIRK

CUMMINGS

EGREMONT

MONROE

AVE.

ROAD

HARTLEY ROAD

ROAD

ROAD

ROAD

ROAD

ROAD

ROAD

ROAD

ROAD

ROAD

ROAD

ROAD

ROAD

ROAD

ROAD

ROAD

UNION ST

WALLINGFORD ROAD

COLONIAL ROAD

WALLINGFORD ROAD

WALLINGFORD ROAD

WALLINGFORD ROAD

WALLINGFORD ROAD

WALLINGFORD ROAD

WALLINGFORD ROAD

WALLINGFORD ROAD

47A Stevens

BOURNEDALE

Horace P. Hunting et al 76.079

47A J

47A K

47A L

47A M

47A N

47A O

47A P

47A Q

47A R

47A S

47A T

47A U

47A V

47A W

47A X

47A Y

47A Z

47A AA

47A AB

47A AC

47A AD

47A AE

47A AF

47A AG

47A AH

47A AI

47A AJ

47A AK

47A AL

47A AM

47A AN

47A AO

47A AP

47A AQ

47A

47B

47C

47D

47E

47F

47G

47H

47I

47J

47K

47L

47M

47N

47O

47P

47Q

47R

47S

47T

47U

47V

47W

47X

47Y

47Z

47AA

47AB

47AC

47AD

47AE

47AF

47AG

47AH

47AI

47AJ

47AK

47AL

47AM

47AN

47AO

47AP

47AQ

Freeman Wright

Henry M. Whitney et al Trs. West End Land Co. 33.764

Geo. W. Johnston

Geo. W. Johnston

Geo. W. Johnston

Mary A. Stacy

James H. G. G. G.

Frede Hinckley

Abbie G. Dana

Robt. W. Good

Lillian B. Farrar

Thos. H. Agnes Jolliffe

John P. Post

Henry W. Patterson

Henry W. Patterson

Sarah E. Corey

Sarah E. Corey

Sarah E. Corey

Sarah E. Corey

Sarah E. Corey

Sarah E. Corey

Sarah E. Corey

Sarah E. Corey

Sarah E. Corey

Sarah E. Corey

Sarah E. Corey

Sarah E. Corey

Sarah E. Corey

Sarah E. Corey

Sarah E. Corey