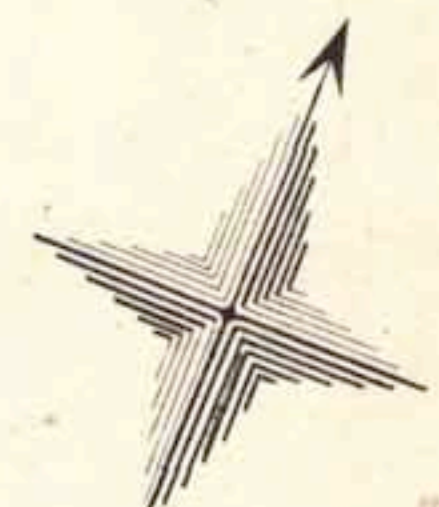
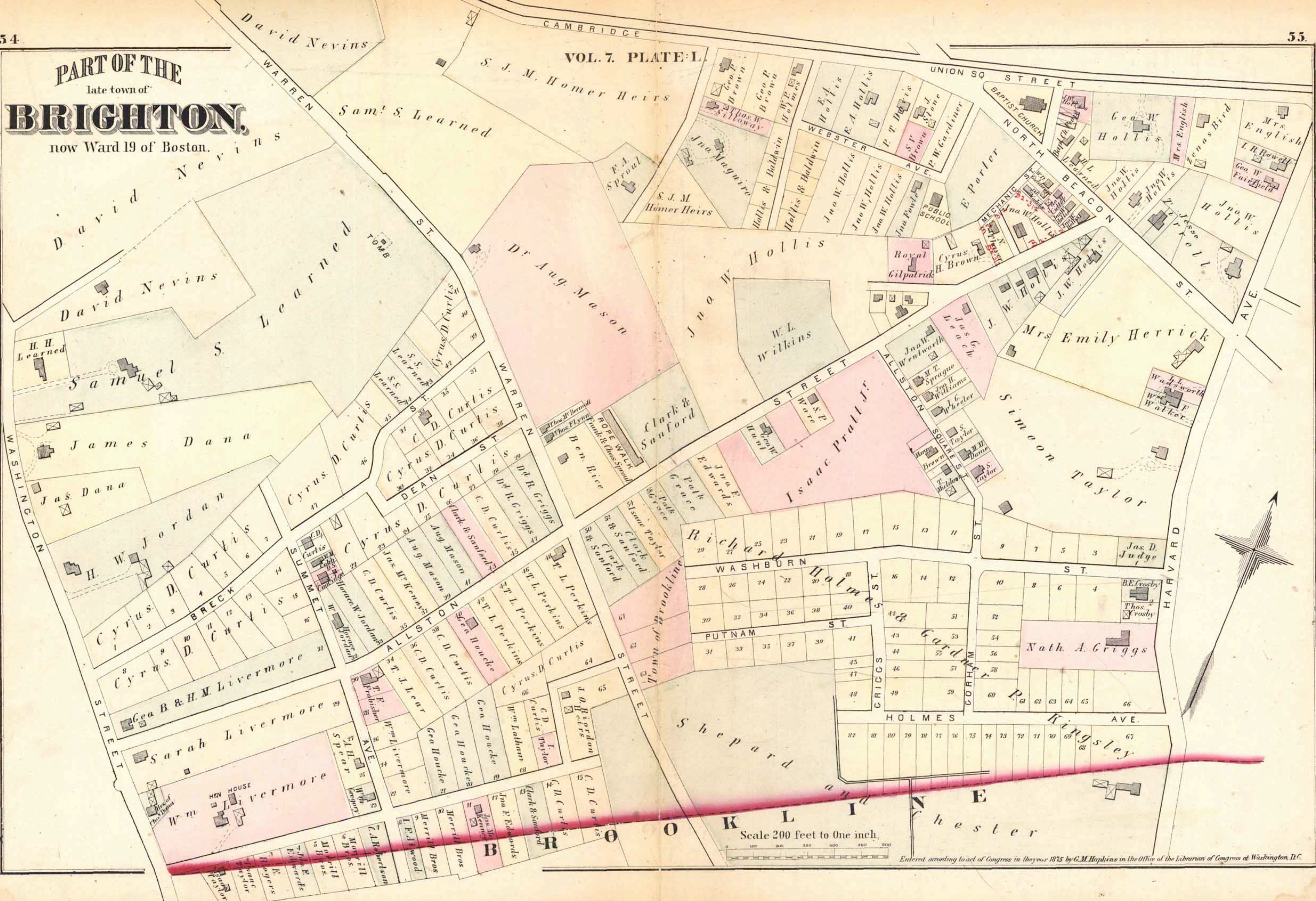


PART OF THE  
late town of  
**BRIGHTON**  
now Ward 19 of Boston.

CAMBRIDGE  
VOL. 7. PLATE L.



Scale 200 feet to One inch.

Entered, according to act of Congress in the year 1875 by G.M. Hopkins in the Office of the Librarian of Congress at Washington, D.C.